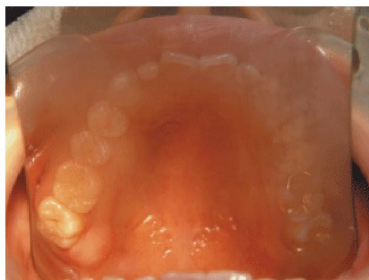


FF-Photo DMBF1-220



- It will be easy to take a picture **without fogging on the surface of the mirror** during the photographing.
- **The focus of the picture shall be with high brightened LED lamp** not from the light of the patient's unit chair, along with inner **dehumidifying fan for defogging on the surface of the mirror**.
- A person who works by himself or herself **can take a picture without any assistant**.
- It is convenient to carry the device due to the **compact size**.
- It is so useful on the **Orthodontic treatment** which is taking many chances to take a photograph or also useful for **the children, the aged, and the disabled patients** those who are not responding well.
- **DMBF-220** is the new device for the metal mirror and **DMBF1-220** is all interchangeable with glass and metal mirror each other.

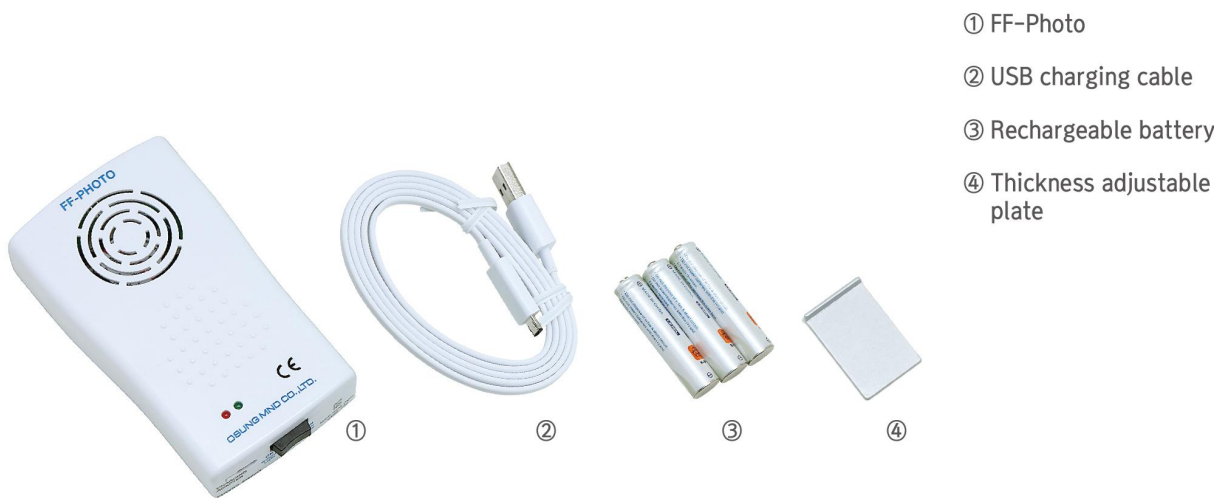


• No FF-PHOTO used

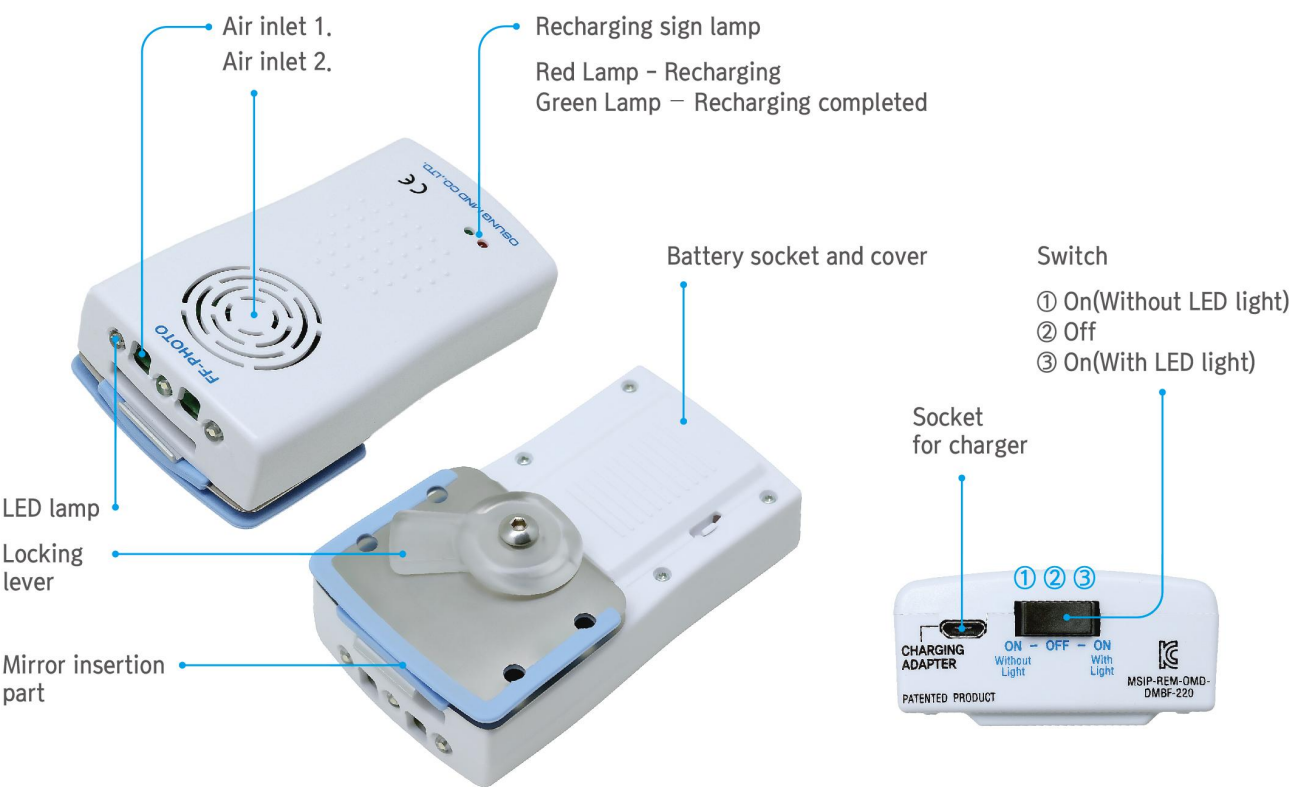


• FF-Photo used

Product component : DMBF1-220



Looking around the product : DMBF1-220



How to use : DMBF1-220



1. Insert the enclosed battery into the device.



2. Connect the rechargeable cable and start to recharge.



3. Turn the locking lever clockwise and put the photo mirror into the device to attach.



4. Turn the locking lever anticlockwise to fix.

How to use : DMBF1-220



5. Attach the enclosed [Thickness adjustable plate] [related to the thickness](#).

ex) Attach the enclosed [Thickness adjustable plate] to use when you use our OSUNG [metal](#) mirror.

Remove the [Thickness adjustable plate] to use when you use our OSUNG [glass](#) mirror.

Safety precautions

- The internal parts of this product can not be repaired by the user. In case of malfunction or defect, please contact OSUNG MND for technical assistance.
- Do not disassemble or modify the device.
- To reduce the risk of fire or electric shock, do not expose the device to moisture.
- Use recommended batteries and accessories, and do not use for any other purpose than intended use.
- This device can not be sterilized. Do not sterilize the device.
- Do not connect the positive terminal and negative terminal of the battery to each other with any metal object such as wire. Do not carry or store battery together with metal objects. Do not pierce or strike with sharp objects. (there is a risk of explosion if there is electrical shorting between battery plates.)

Specifications and characteristics of accessories

- Maximum usage time : 2 hours(working mode, fully charged)
- Battery specification : AAA, 1.2V, 900mAh, Ni-MH (3ea)
- The Battery Lifespan: Rechargeable around 1,000 times.

Warranty

- Free of charge warranty service : **1year** from date of purchase
 - If manufacturing defects or natural malfunction occur during the guarantee and warranty period, OSUNG MND shall make all necessary alterations, repairs, and replacements free of charge.
 - To request warranty repair or replacement, and in order for your claims to be processed smoothly it is necessary that you present your purchase receipt. **Therefore, please keep your purchase receipt and the purchase records.**
 - If your warranty has expired, or your problem wasn't caused by a manufacturer's fault, you will need to pay for the repair.
- If you have any further inquiries about usage, purchase of battery and others, please contact us for prompt service.